



# ANNUAL REPORT

COUNCIL FOR CHRISTIAN  
COLLEGES & UNIVERSITIES



CCC LEADERSHIP 2022-23

Shirley V. Hoogstra, J.D.  
President

Jill Hartness, Ed.D.  
Chief Advancement  
Officer

John Addleman, Ph.D.  
Chief Operating Officer,  
Chief of Staff

Stan Rosenberg, Ph.D.  
Vice President for  
Research and  
Scholarship

Mandi Bolton  
Senior Vice President,  
Chief Financial Officer

CCC BOARD OF DIRECTORS

Shirley V. Hoogstra, J.D.  
President, CCCU  
Ex-Officio

Eric Bruntmyer, J.D.  
President, Hardin-Simmons University

Dan Boone, D.Min.  
President, Trevecca Nazarene  
University  
Chair

Joseph L. Castleberry, Ed.D.  
President, Northwest University

Timothy Dalrymple, M.Div., Ph.D.  
President and CEO,  
Christianity Today

Phil Schubert, Ed.D.  
President, Abilene Christian  
University  
Vice Chair

Justin E. Giboney, J.D.  
Co-Founder and President, AND  
Campaign

Bishop Claude Alexander Jr.  
D.Div., D.Min.  
Senior Pastor, The Park Church  
Secretary

David Hoag, Ph.D.  
President, Warner University

Erik Hoekstra, Ph.D.  
President, Dordt University

Sherilyn R. Emberton, Ed.D.  
President, Huntington University  
Assistant Secretary

J. Keith Newman, Ed.D.  
President, Southern Nazarene University

Sidney J. Jansma Jr., M.B.A.,  
Chair of the Board,  
Wolverine Gas & Oil Corporation  
Treasurer

John S. Pistole, J.D.  
President, Anderson University (IN)

Deana L. Porterfield, Ed.D.  
President, Roberts Wesleyan College and  
Northeastern Seminary

David Wright, Ph.D.  
President Emeritus,  
Indiana Wesleyan University  
Immediate Past Chair

Andrew Westmoreland, Ed.D.  
President Emeritus, Samford University

Shirley A. Mullen, Ph.D.  
President Emeritus, Houghton  
College  
At Large Director

TABLE OF  
CONTENTS

3  
ABOUT THE CCCU

5  
ADVOCACY

7  
PROFESSIONAL  
DEVELOPMENT

9  
COMMUNICATIONS

11  
RESEARCH &  
SCHOLARSHIP

13  
EXPERIENTIAL  
EDUCATION

15  
ADVANCEMENT

17  
FINANCIAL  
INFORMATION

19  
THOUGHT  
PARTNERS

21  
OUR INSTITUTIONS

LETTER FROM OUR PRESIDENT

Dear Friends,

As I reflect on this last year, it is increasingly clear that the world is a divided and polarized place. How then, as Christians, are we to live faithfully amid those divisions? How can we be light in a world of darkness? We believe that Christ is the source of that life-giving light, and that Christian colleges and universities provide the educational experiences that transform students’ hearts, minds, and souls to love what is true, good, and beautiful. The world yearns for more peacemakers—and they can be found in your institutions. The CCCU is honored to continue our service to you and celebrate another year of advancing God’s kingdom in the classroom, the public square, and the world at large.

In this year’s annual report, you will find the latest updates on the CCCU’s work. Whether it is advocating for religious liberty on Capitol Hill, at the Department of Education, or in the courts, creating conferences to unite our member institutions around the most pressing conversations of our day, or creating opportunities to invest in high-quality research and scholarship, the CCCU serves to provide the best resources for the best in Christian higher education: you. This report highlights some of our greatest legal victories, such as the *Hunter v. Dept. of Education* win and the protection of religious liberty found in the amendments of the Respect for Marriage Act, as well as features from our most influential gatherings, such as the 2023 Presidents Conference where we assembled prominent thinkers in Christian higher education, government relations, and the media.

The CCCU is only as strong as the institutions we represent, so it is our hope that the work we are doing on your behalf might bless your work all the more. We pray you are encouraged and empowered by the Lord’s faithfulness as we set our sights on the new year.

In this work together,

Shirley



Shirley Hoogstra, J.D.  
President, CCCU

”

We believe that Christ is the source of that life-giving light. Christian colleges and universities provide the educational experiences that transform students’ hearts, minds, and souls to love what is true, good, and beautiful.

The world yearns for more peacemakers—and they can be found in your institutions. ”

# ABOUT THE CCCU

Since 1976, the CCCU has served as the leading national voice of Christian higher education. With campuses across the globe, including more than 150 in the U.S. and Canada and more than 30 from an additional 19 countries, CCCU institutions are accredited, comprehensive colleges and universities whose missions are Christ-centered and rooted in the historic Christian faith. The CCCU's mission is to advance the cause of Christ-centered higher education and to help our institutions transform lives by faithfully relating scholarship and service to biblical truth.

To fulfill our mission and meet the needs of our institutions, we provide unique services for administration, faculty, students, and friends of Christian higher education.

**Advocacy** | We advocate for the right of each CCCU institution to practice its sincerely held religious beliefs and to participate fully in the public square without penalty.

**Professional Development** | Our conferences and leadership institutes develop skills, build peer connections, and foster a diverse, highly qualified pool of candidates for current and future leadership in Christian higher education.

**Communications** | As an effective and respected advocate for Christ-centered higher education in the U.S. and around the world, we highlight the contributions of our institutions to the common good.

**Research & Scholarship** | We enable faculty development and scholarship through projects, grants, and scholarly related initiatives intended to help faculty and institutions excel in their scholarship and integrate faith into their discipline. We also conduct, interpret, and disseminate research to foster institutional analysis and improvement.

**Experiential Education** | CCCU GlobalEd is a collection of faith-integrated, off-campus study programs that foster intellectual, cultural, vocational, and spiritual growth.

**Thought Partnerships** | As the leading national voice of Christian higher education, we foster deep, ongoing partnerships with organizations that align with our mission and values and benefit our members.

To advance the cause of Christ-centered higher education and to help our institutions transform lives by faithfully relating scholarship and service to biblical truth.

## CCCU INSTITUTIONS AT A GLANCE

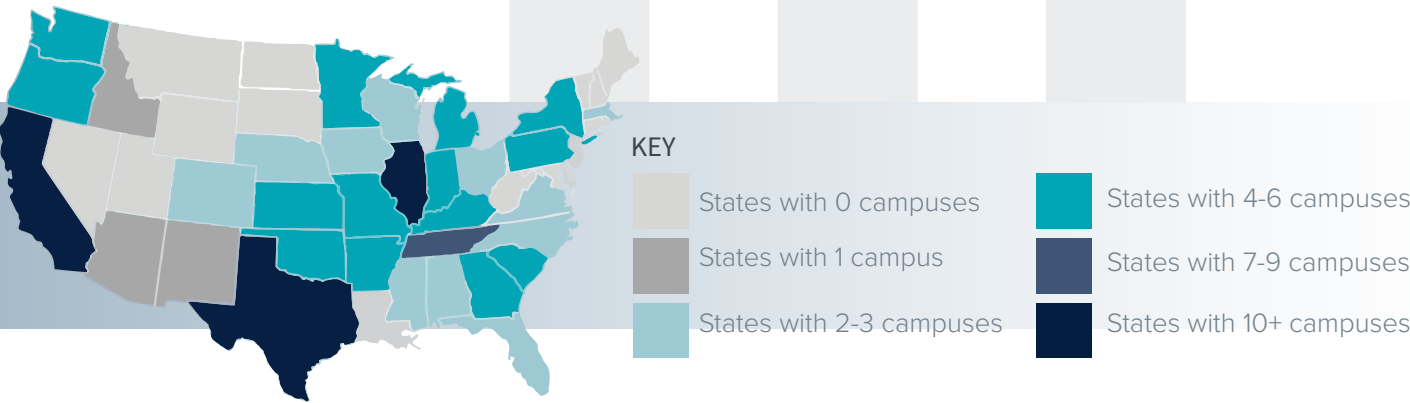
185+  
Colleges & Universities

10,600,000+  
Alumni Around the World

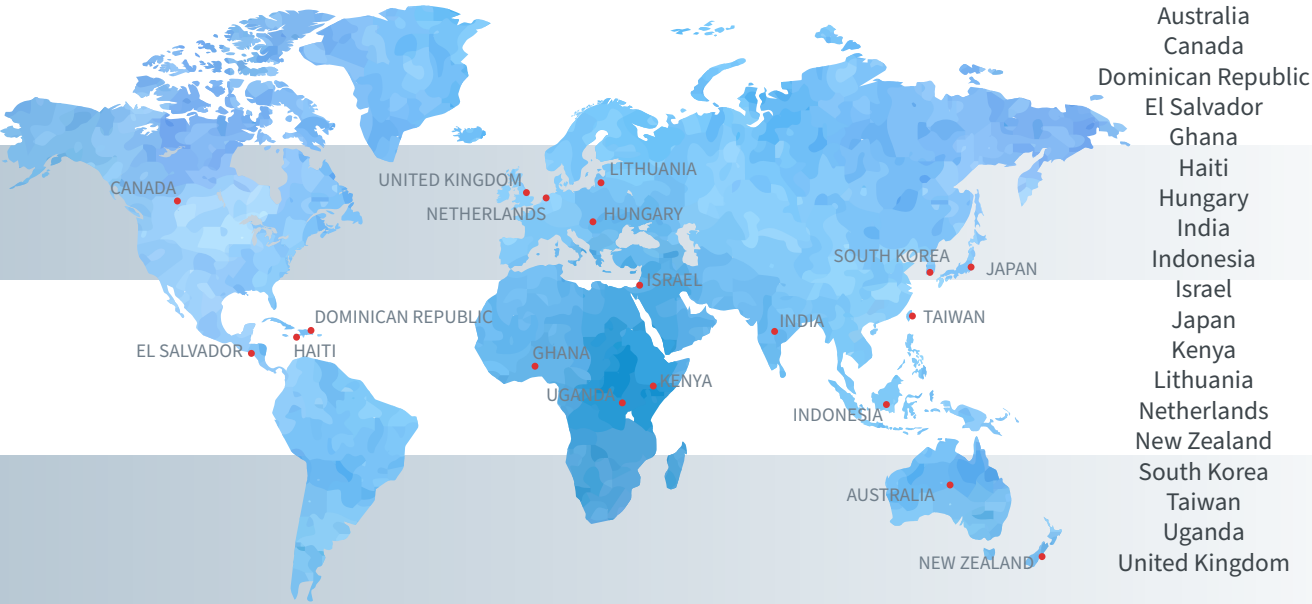
600,000+  
Students Enrolled Globally

97,000+  
Faculty & Staff Employed Globally

U.S. INSTITUTIONS



INTERNATIONAL INSTITUTIONS





# ADVOCACY

As the leading national voice for Christian higher education, the CCCU works in all three branches of government to be an **effective, respected, and honest advocate for Christ-centered higher education**. Our advocacy priorities stem from our desire to support our campuses and students, staff, and faculty. We work to ensure religious freedom and institutional autonomy for all our members. The CCCU provides a unified voice to highlight the contributions of our institutions, and of our students, to the common good.

In fiscal year 2022-2023, our team:

SENT

56

Letters to Congress, the White House, the Treasury, and the Department of Education

FILED

9

Amicus Briefs to the Supreme Court and other federal courts

VISITED

61

Congressional offices in the House and Senate



## OUR TOP ADVOCACY PRIORITIES AND ACCOMPLISHMENTS

### PROMOTING THE UNIQUE ROLE OF CHRISTIAN HIGHER EDUCATION

The CCCU filed multiple comment letters around the Hill pushing back against a narrow understanding of higher education focused solely on job training and financial value by highlighting the unique the work of faith-based institutions. Faith-based institutions seek to develop students who, in the words of the Old Testament prophet, “act justly and love mercy and walk humbly with their God” (Micah 6:8). CCCU institutions form students of moral commitment who live out Christian virtues in their daily lives, giving meaning and coherence to every part of the academy.



### PROTECTING RELIGIOUS MISSION AND CONVICTION

Moody Bible Institute defended a suit from a former employee who was terminated for advocating against the school’s clearly articulated doctrinal positions. The CCCU led a brief in that case supporting the First Amendment protection of churches and religious institutions to live out their faith free from improper government interference and entanglement in doctrine.



### INFORMING MEMBERS OF IMPORTANT UPDATES

The 2023 CCCU Presidents Conference featured James Kvaal, under secretary at the Department of Education, to discuss current and upcoming initiatives and regulations related to higher education. The CCCU Legal and Public Policy Conference highlighted a number of sessions regarding key issues like the regulatory landscape, upcoming lower court and Supreme Court cases, intellectual property risks, and athletics changes and challenges.



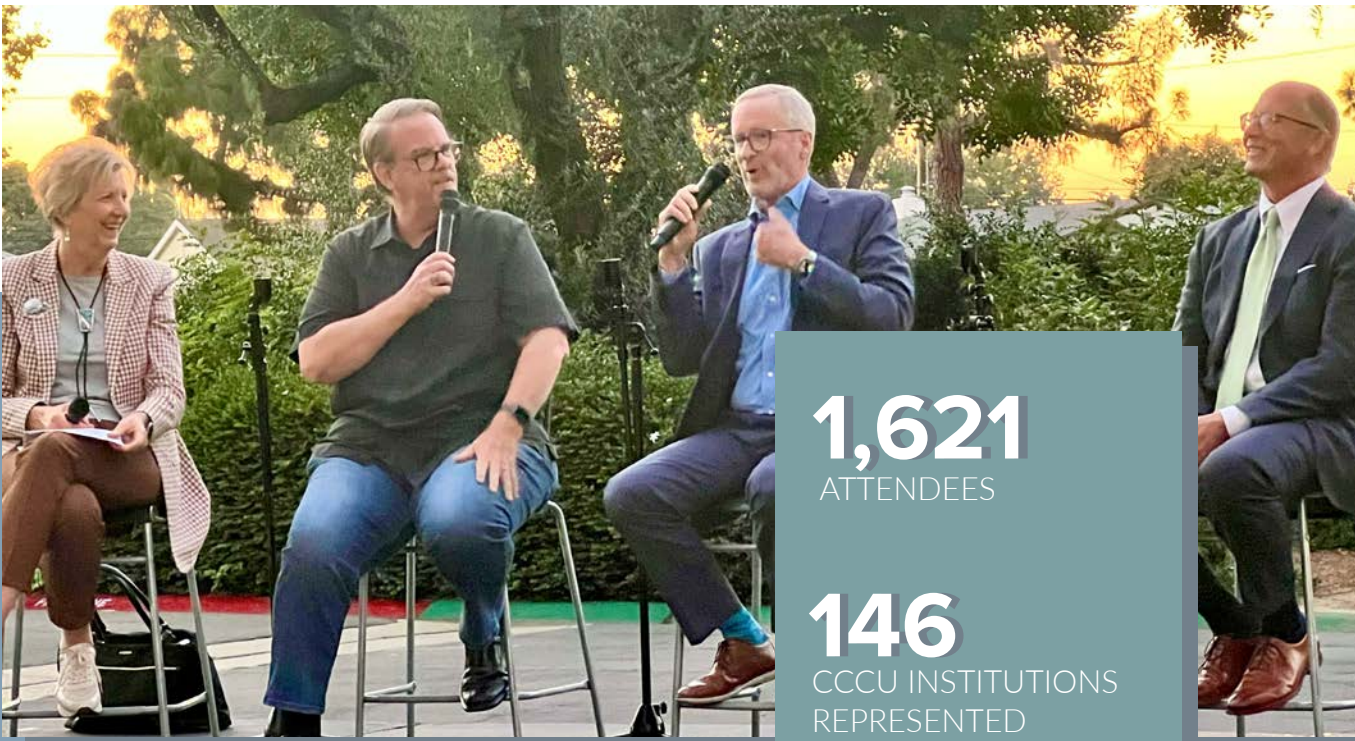


# PROFESSIONAL DEVELOPMENT

The CCCU equips and empowers campus leaders and faculty in their work through high-quality professional development programs that deepen skills, build connections, and share new ideas in the face of today’s challenges and opportunities of the day. Our conferences and our Leadership Development Institutes play a pivotal role in developing the next generation of Christian higher education leaders by training and equipping a diverse, highly qualified pool of candidates.

## 2022-2023 Conferences

Events in the last fiscal year included the New Presidents Institute, the Governance Institute, the Legal and Public Policy Conference, the Presidents Conference, the Multi-Academic Conferences, the Leadership Development Institutes, and the Collaboration in Doctoral Education Forum.



1,621  
ATTENDEES

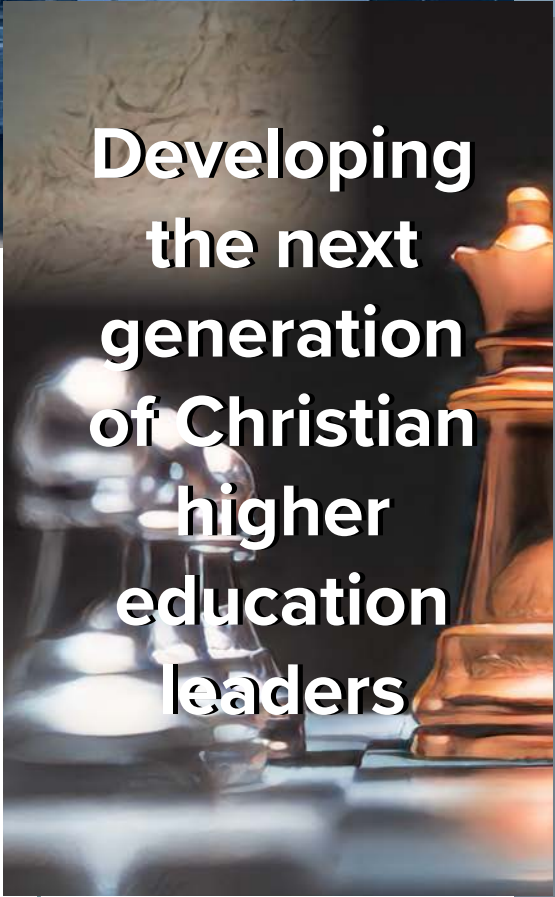
146  
CCCU INSTITUTIONS  
REPRESENTED

73  
SPONSORING  
PARTNERS



## THOUGHT LEADERS AT THE 2022-2023 CCCU EVENTS INCLUDED:

- Ruth Haley Barton**, Founding President/CEO, Transforming Center
- Eric Baxter**, VP & Senior Counsel, Becket Fund for Religious Leadership
- Rasool Berry**, Pastor, The Bridge Church; Director of Partnerships & Content Development, Our Daily Bread Ministries
- David Brooks**, Op-Ed Columnist, *The New York Times*
- Laurel Bunker**, Principal Consultant, The Boncoeur Collaborative
- Curtis Chang**, Founder, Redeeming Babel
- Tim Dalrymple**, President & Editor-in-Chief, *Christianity Today*
- Lisa Fields**, Founder & President, Jude 3 Project
- David French**, Op-Ed Columnist, *The New York Times*
- James Kvaal**, Under Secretary, U.S. Department of Education
- Matt Lucas**, President & CEO, Our Daily Bread Ministries
- Russell Moore**, Editor-in-Chief and Director of the Public Theology Project, *Christianity Today*





# COMMUNICATIONS

The CCCU believes that Christian higher education contributes in wonderful and unique ways to the good of the world and the United States. CCCU institutions practice a coherent approach to education in which they seamlessly weave together the development of the mind, spirit, body, and emotions in the quest not just for knowledge, but also for wisdom and faithfulness. CCCU institutions train future leaders who are deep thinkers and equipped doers, committed to working for the common good of their communities because of their faith in Jesus Christ. **As the leading national voice for Christian higher education, the CCCU highlights this valuable work our institutions provide.**

## TOP COMMUNICATIONS INITIATIVES AND PRIORITIES THIS YEAR INCLUDE:

### Faith Counts Partnership

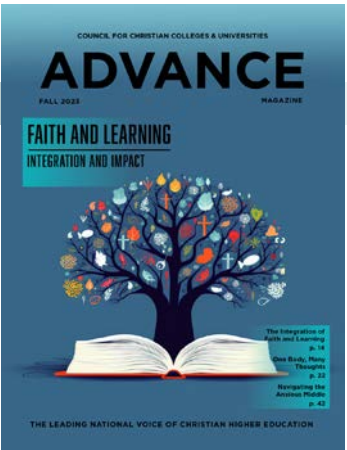
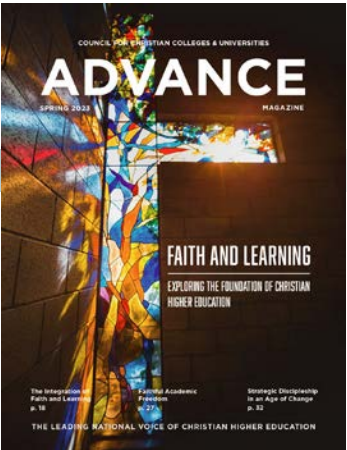
The communications team has partnered with Faith Counts, a nonprofit, non-denominational organization comprised of faith communities representing nearly 100 million Americans. The goal is to share a simple but important message: Faith counts.

### Christian Higher Education Month

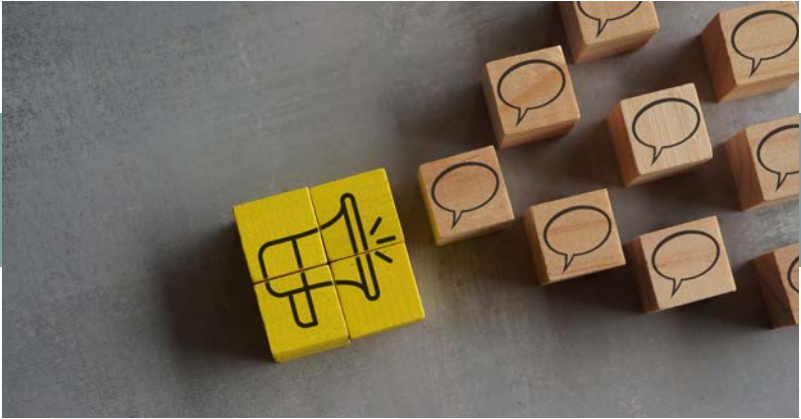
October is Christian Higher Education Month, and the communications team makes a concerted effort to highlight the value and impact of Christian higher education. We identify curriculum advancements that integrate faith and learning, highlight economic strengths and opportunities for students, spotlight campus community involvement, and share testimonials from students and administrations to acknowledge the many ways people support the mission of their institutions.

### Advance Magazine

Recent issues of CCCU’s biannual *Advance* magazine have focused on the unique value of Christian higher education (Spring 2023) and the foundational practice of integrating faith and learning (Fall 2023). These issues provide valuable resources for Christian higher education professionals as well as offer important insights for those less familiar with the important work of CCCU institutions. All issues are available online at [www.cccu.org/magazine](http://www.cccu.org/magazine).



## MEDIA COVERAGE



In 2022-23, we worked with a wide variety of journalists and media outlets, in both the faith-based and higher education sectors, to help shape stories about the work of the CCCU and value of Christian higher education. A few of the notable articles from the last year include:



“A lot of people recognize the value that faith brings to major life decisions and college is a major life decision.”



College Presidents Issue Statement Supporting Israel And ‘Moral Clarity’ In War With Hamas.



Some ideas can be replicated and scaled, but religious colleges should “lean into your distinctiveness.”



“Religious purpose also brings a call to care for the poor. This is manifest not only in needs-based scholarships, but also in cost innovations at religiously based universities.”



“In true friendship, there is mutuality,” Shirley Hoogstra, president of the Council for Christian Colleges and Universities, told me. ‘When Jesus called his disciples his friends, he both elevated them and brought them closer.’ Their worlds merged.”



“CCCU strives to support responsive, not reactive, diversity efforts.”



“That revival sparked the need for Christ in the center of the lives of students right now.”



# RESEARCH & SCHOLARSHIP

Through an array of initiatives, the CCCU promotes the development of high-quality academic research projects and provides opportunities for faculty to conduct innovative research with peers from other campuses. We also provide research on important topics like compensation, retention and graduation rates, and financial health so that administrators can have the most current information for leading highly successful campuses that employ best practices for student thriving and academic success. These projects are designed, developed and managed by the team at SCIO: Scholarship & Christianity In Oxford, the CCCU's U.K. subsidiary.

## INSTITUTIONAL RESEARCH

To help our member institutions gain a better understanding of key metrics and pursue their best path to institutional success, the CCCU has developed a collection of data and reports in a variety of areas. Some are public, while others are confidential for participating members only. This year's reports included:

- State of STEM
- Campus Diversity Statistics 2021
- Report on Best Practices for Supporting Diversity in STEM
- Faculty Hiring and Retention at CCCU Institutions
- Campus Responses to COVID-19
- Salary and compensation surveys for faculty and key campus leaders
- Surveys on retention, graduation rates, and financial trends

## FACULTY GRANTS

The CCCU enables faculty development and scholarship through institutes and grants intended to help faculty excel in their scholarship and integrate faith into their discipline.

### CCCU Networking Grants for Christian Scholars

These grants encourage collaborative scholarship among faculty at CCCU institutions, connecting them with broader networks and supporting high quality scholarship that brings Christian voices into contemporary academic conversations. In 2022-23, a total of \$68,000 was awarded to five research teams hailing from 15 different institutions — including the first-ever team of researchers from an International Affiliate university. The projects include 23 scholars representing 11 CCCU institutions (including Daystar University and Africa International University, both CCCU International Affiliate institutions located in Kenya) and four additional institutions.

### Supporting Structures: Innovative Collaborations to Enhance STEM Research at CCCU Member Institutions

This ongoing three-year, \$2.5M project (launched August 2021) is currently supporting 24 early-career STEM faculty from nine CCCU institutions, enabling them to pursue research by collaborating with major research institutions. These faculty also meet each summer during the project for a 10-day program in Oxford to engage with renowned scholars on important questions of science and Christian faith. The grant also supports a range of other campus activities geared toward helping campus communities tackle tough questions at the intersection of science and Christian faith and strives to increase faculty diversity in STEM fields. This project is funded with major grants from the John Templeton Foundation and the MJ Murdock Charitable Trust.

# ADDITIONAL HIGHLIGHTS FROM 2022 - 2023

## Additional Highlights from 2022-2023 Workshop for Strengthening Grant and Research Offices

In February, the CCCU hosted a seminar aimed at empowering CCCU institutions to exploring practical steps for improving, expanding, and sustaining grant and research activities on their campuses. The workshop was offered in conjunction with the CCCU's Supporting Structures grant.

## New Grant Project: Reimagining Faculty Roles and Investing in Adjunct Faculty Formation and Support in Christian Higher Education

The MJ Murdock Charitable Trust notified the CCCU in November 2022 that they will award a \$366,000, three-year grant toward a new project to reimagine the professoriate and invest in the formation of adjunct faculty at CCCU institutions. This ground-breaking project addresses a major issue in higher education: institutions (whether Christian or non-sectarian) have become dependent on the use of adjunct faculty. Adjunct positions may be financially advantageous to their employers, but they typically receive little moral, intellectual, spiritual, and professional development. This has missional and ethical implications as well as practical, and it undermines the student experience and formation. The project began in fall 2023.

## Logos

This two-week summer workshop (made possible by funding from Steve and Jackie Green and offered in cooperation with the Museum of the Bible) provides graduate students and graduating seniors in biblical studies a deep dive into conversations on museums, biblical texts, vocation, and the Christian mind. The program, which has been offered by SCIO since 2013, now alternates between meeting in Washington, D.C., and Oxford.

## CAP: Collaborative Assessment Project

Offered in partnership with Azusa Pacific University and the Thrive Project, CAP offers CCCU members a common set of campus assessments that provide empirical evidence that Christian higher education is indeed a significant and valuable enterprise. CAP includes a series of webinars for campus leaders to discuss the findings, implications, and potential follow-up actions arising from the data.

## Council for Collaboration in Doctoral Education

This council promotes interaction and collaboration for the development and support of doctoral education programs at CCCU institutions. During the 2022-23 fiscal year, the group hosted its first in-person gathering since 2019, bringing together nearly 80 participants from across the CCCU for a time of learning and collaboration.

## Library Leadership Council

This council creates opportunities for cooperation and collaboration between libraries at CCCU institutions to take full advantage of the knowledge and resources across the CCCU. A year-long webinar series, as well as an in-person gathering at the Snezek Library Leadership Institute, allowed CCCU library leadership to engage the challenges and opportunities of maintaining academic libraries in a Christian context.





# EXPERIENTIAL EDUCATION

CCCU GlobalEd is a collection of faith-integrated, off-campus study programs that foster intellectual, cultural, vocational, and spiritual growth. Our programs transform the way students experience the world and equip them to live out their Christian faith in today's global society. More than 13,000 students have benefitted from our academically robust, Christ-centered experiential education programs for over 40 years.



## BY THE NUMBERS

**125**  
STUDENTS

**48**  
CCCU INSTITUTIONS REPRESENTED

## PROGRAM HIGHLIGHTS

### MIDDLE EAST STUDIES PROGRAM (AMMAN, JORDAN)

The Middle East Studies Program (MESP) gives students the opportunity to experience the daily life, language, food, culture, religion, and politics of a region with ancient roots and modern significance. MESP continues to emphasize helping students understand interfaith relationships and exploring difficult issues in a complex, strategic region, as it has done for 30 years.



### SCHOLARSHIP & CHRISTIANITY IN OXFORD (OXFORD, UNITED KINGDOM)

Scholarship & Christianity in Oxford (SCIO) offers students a chance to study at Oxford, the oldest university in the English-speaking world, and dive into an academic experience steeped in tradition yet on the cutting edge of research and scholarship. SCIO participants join a community of faith engaged in serious learning, affirming their place as Christian scholars dealing with difficult and profound issues in their field of study.

“A truly awe-  
inspiring  
journey”

## IN THEIR OWN WORDS

“SCIO was a truly awe-inspiring journey, where knowledge met curiosity and possibilities flourished. From engaging lectures to immersive discussions, my experience at SCIO was a beacon of intellectual growth, fostering lifelong friendships and unlocking new horizons of learning. It was an unforgettable adventure that left me with cherished memories and a renewed passion for discovery.”

— SCIO PARTICIPANT

“It was very clear to see how faith perspective was a critical component for all aspects of our learning, whether it be in motivation, in learning more about faith (our own or others), or doing devotionals and liturgies regularly.”

— MESP PARTICIPANT



The CCCU strategically manages and enhances its relationship with members, donors, supporters, partners, and stakeholders to support and advance the mission of the CCCU.

The CCCU’s advancement team serves as a vital link between the CCCU’s membership and its supporters, working to provide quality member services, secure financial resources, and cultivate meaningful long-term relationships with donors and supporters who share a vision for the value of Christian higher education.

DONOR SPOTLIGHT | ROLLIE AND BARBARA ANDERSON

Together, Rollie and Barbara Anderson have long served as a model of Christ’s call to care for, love, and serve our neighbors. For decades, the Andersons have faithfully served and supported many organizations and causes, including the cause of Christian higher education, that seek to deepen a sense of community, strengthen families, provide opportunities for young people that they might not have had otherwise, and shine the light and love of Christ on areas where it is most needed.



Their family business, Anderson Trucking Service, has become not only a means of commerce transportation but also a lifeline for communities. After Hurricane Maria hit Puerto Rico in 2017, for example, Anderson Trucking Service played a key role in helping the millions of devastated residents there, providing generators and pumps to save a

dam from breaking. Under the Andersons’ leadership, their company also provided potable water and other crucial equipment for residents, the military, and aid organizations serving there.

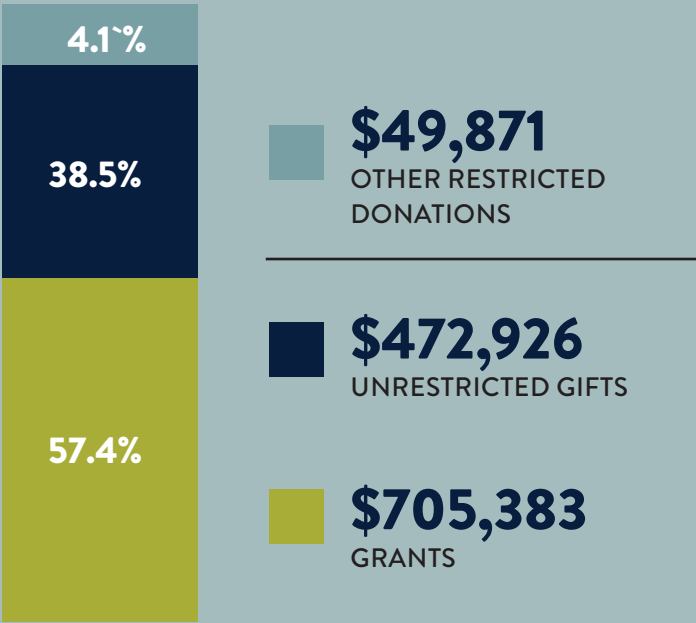
The Andersons have also long supported Christian higher education, including the CCCU and Bethel University (MN), where Jim Green, chair of the university’s board of trustees, noted that their generosity sets a “guiding light for others who might want to make a gift.”

In recognition of their lifelong commitment to helping others and their generosity to creating opportunities for the next generation, the CCCU awarded the Andersons the 2023 CCCU Philanthropy Award.



ADVANCEMENT BY THE NUMBERS

\$1,228,180 FUNDS RAISED IN 2022-23



UNITE WITH US!

We need help to sustain our operations and stay on the leading edge of this meaningful and crucial work. We ask that you prayerfully consider a gift to support the CCCU as we build a war chest for current and brewing legal battles. **When you support the CCCU, you are creating a unified voice that preserves and advances Christian higher education now and for future generations.** Every gift makes a difference. Donate using the QR code below.





# FINANCIAL

The Council for Christian Colleges & Universities commits itself to the highest standards of financial stewardship. We take seriously the important responsibility to prudently allocate and wisely invest the funds entrusted to us, and we are committed to balancing our spending with our income each year.

As part of our commitment to financial integrity, we retain a membership with the Evangelical Council for Financial Accountability (ECFA) and have an external audit completed annually. The information below represents the operating activity of the CCCU. For full audited financial statements, contact the Accounting Department at [accounting@cccu.org](mailto:accounting@cccu.org),

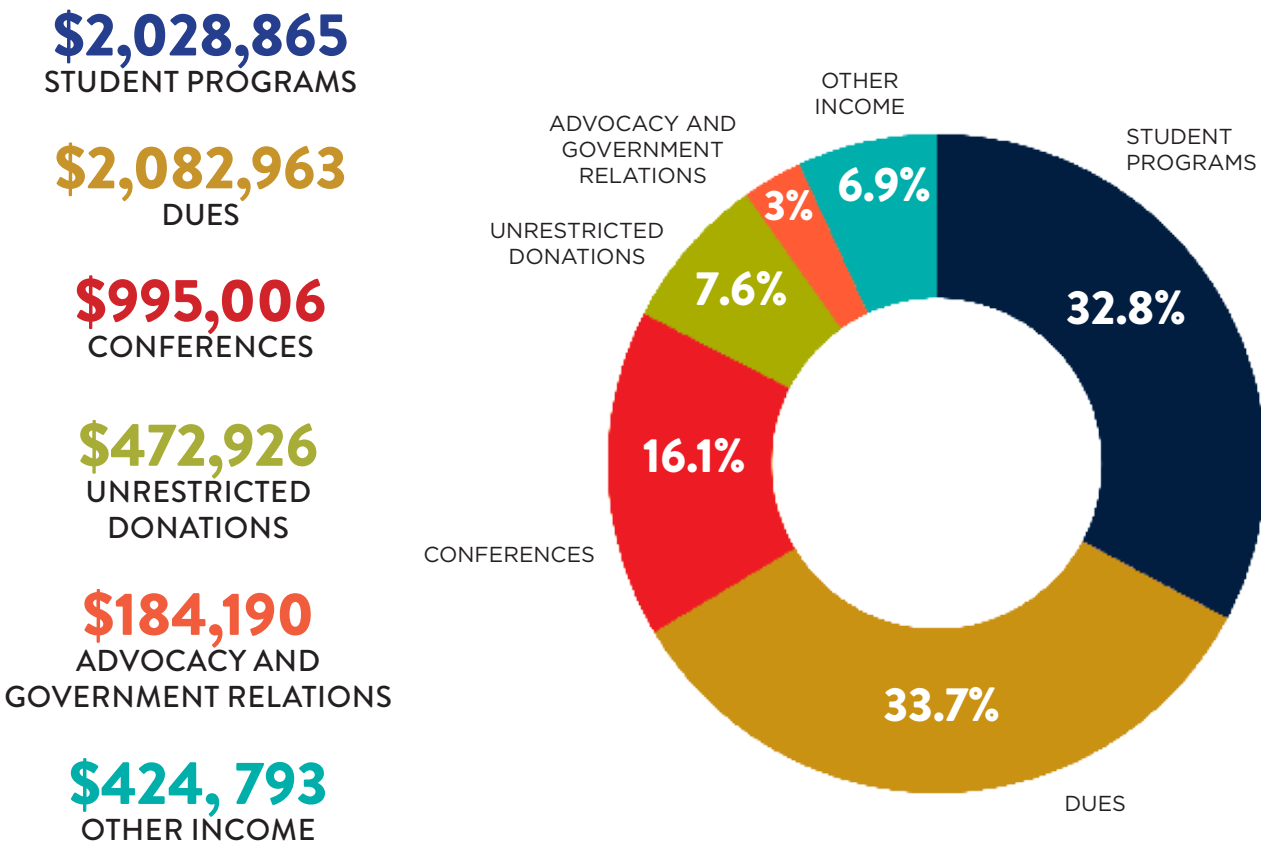
## 2022-23 REVENUE SUMMARY

TOTAL OPERATING  
SUPPORT & REVENUE

\$6,188,743

-23.3%  
FROM 2021-22

### OPERATING SUPPORT & REVENUE BREAKDOWN



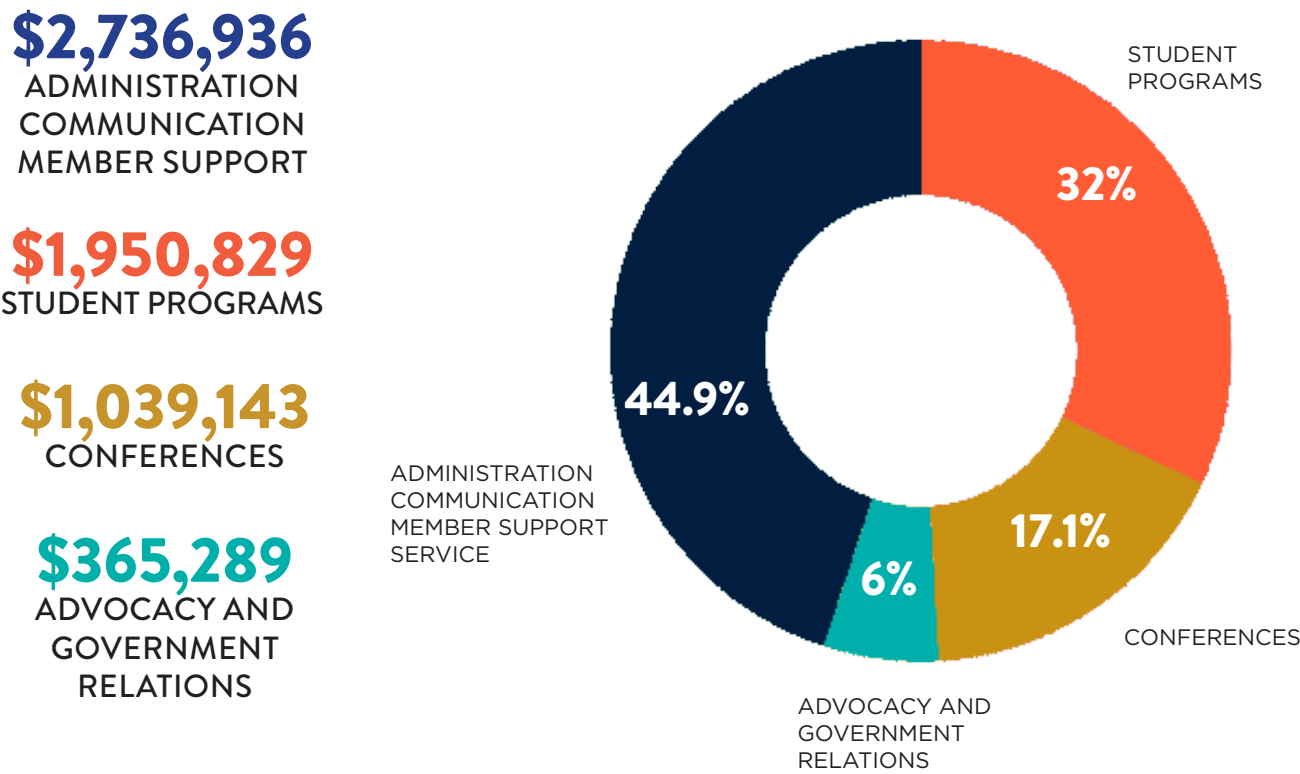
## 2022-23 EXPENSE SUMMARY

TOTAL OPERATING  
EXPENSE

\$6,092,197

-10.9%  
FROM 2021-22

### OPERATING EXPENSE BREAKDOWN



OTHER  
RESTRICTED  
GIFTS

4.1%  
UN-  
RESTRICTED  
GIFTS  
38.5%

GRANTS  
57.4%

### ADVANCEMENT BY THE NUMBERS

Funds Raised in 2022-23	\$1,228,180
Unrestricted Gifts	\$472,926
Grants	\$705,383
Other Restricted Gifts	\$49,871



# THOUGHT PARTNERS

**As the leading national voice of Christian higher education, we foster deep, ongoing partnerships with organizations that align with our mission and values and benefit our members.** These

partnerships take on various forms to best meet the needs of our member institutions and their communities. Some of our partnerships in 2022-23 include:

## **Steve and Jackie Green**

*Logos: A Workshop on Biblical Texts and Manuscripts*

SCIO: Scholarship & Christianity in Oxford, the CCCU's UK-based center for advancing research, continues to collaborate with the Museum of the Bible to offer the Logos in Oxford program, which SCIO has run since 2013. This two-week program, funded by Steve and Jackie Green, invites promising graduate students and graduating students who are on a vocational path toward becoming scholars to participate in a two-week program that focuses on biblical textual and manuscript studies. It alternates each year between Oxford and Washington, D.C. Logos supports serious students undertaking a life of scholarship in biblical and related textual studies by providing opportunities for them to enhance excellence in scholarship in conjunction with developing a vital Christian faith that will enrich participants in their life-long vocational commitments and serving the common good.

## **Museum of the Bible**

*"Scripture and Science" Exhibit*

Stan Rosenberg, the CCCU's vice president for research and scholarship and the executive director of SCIO, has been working closely with the Museum of the Bible (and its antecedents) since 2013 as an academic advisor to the curators. He is also a member of both the advisory board that worked to create the museum as well as the special exhibit Scripture and Science, funded by the John Templeton Foundation, Templeton Religion Trust, and the TBF Foundation. Rosenberg has also provided a series of public lectures at the Museum on the topic.

## **John Templeton Foundation**

*Supporting Structures: Innovative Collaborations to Enhance STEM Research at CCCU Member Institutions. 2022-2024*

The CCCU and SCIO have received a \$2.3 million grant from the John Templeton Foundation, with a further \$256,000 grant from the M.J. Murdock Charitable Trust, to launch a project designed to support and enhance STEM research among faculty and students on CCCU campuses. Working with nine member institutions, the project supports advanced and extended research opportunities for 24 early career faculty; offers summer seminars on science and Christian faith to the faculty; supports public engagement activities and enhancement of STEM faculty diversity at the campuses; provides funding to strengthen undergraduate research; and will be capped by a roundtable in Oxford for the nine presidents in 2024. It included the tour of a professional play, *Fire from Heaven: Michael Faraday and the Dawn of the Electrical Age*, on the 19th century's most notable experimental scientist, a Christian who rose from humble backgrounds to make the astounding discovery of how to induce electricity.

## **MJ Murdock Charitable Trust**

*Pilot Program for Reimagining Faculty Roles and Investing in Adjunct Faculty Formation and Support in Christian Higher Education*

The MJ Murdock Charitable Trust has awarded the CCCU and SCIO a substantial three-year grant of \$336,000 for the SCIO team to develop a pilot program among the CCCU membership in the Pacific Northwest. The project's goal is to reimagine the professoriate and invest in the formation of adjunct faculty at CCCU institutions. Higher education institutions, whether Christian or non-sectarian, have become dependent on the use of adjunct faculty. Adjunct positions may be financially advantageous to their employing institutions, but they bring their own challenges, ones often left unaddressed. Because many adjuncts are employed on a semester-to-semester rather than continuing basis, they typically receive little moral, intellectual, spiritual, and professional development, and if they do not perform, they are often quietly dropped rather than helped to improve. This has missional and ethical implications as well as practical; it undermines the student experience and the deep impact we seek to make with our students and the communities. This ground-breaking project will begin in fall 2023.

*Science and Religion Convening*

In addition to funding part of the Supporting Structures grant noted above and the adjunct formation grant, Murdock invited CCCU's research scholars in science and religion at SCIO to come to a special convening of scholars, funders, and organizations to consult on its future strategy toward engaging issues in science and religion.





MEMBER TYPE KEY

- No symbol = Governing Member
- = Associate Member
- = Collaborative Partner
- = International Affiliate
- = New member in 2022-23

NORTH AMERICAN INSTITUTIONS

UNITED STATES OF AMERICA

ALABAMA

Faulkner University
Samford University

ARIZONA

Arizona Christian University

ARKANSAS

Central Baptist College
Harding University
John Brown University
Ouachita Baptist University

CALIFORNIA

Azusa Pacific University
Biola University
California Baptist University
Concordia University Irvine
Fresno Pacific University
Fuller Theological Seminary
Hope International University
Life Pacific University
Los Angeles Pacific University
Pepperdine University
Point Loma Nazarene University
San Diego Christian College
Simpson University
Vanguard University of Southern California
Westmont College
Jessup University

COLORADO

Colorado Christian University
Denver Seminary

FLORIDA

Palm Beach Atlantic University
Southeastern University
Warner University

GEORGIA

Covenant College
Emmanuel University
Point University
Toccoa Falls College

IDAHO

Northwest Nazarene University

ILLINOIS

Concordia University - Chicago
Greenville University
Judson University
Lincoln Christian University
Moody Bible Institute
North Park University
Olivet Nazarene University
Trinity Christian College
Trinity International University
Wheaton College

INDIANA

Anderson University - IN
Bethel University - IN
Grace College & Seminary
Huntington University
Indiana Wesleyan University
Taylor University

IOWA

Dordt University
Northwestern College

KANSAS

Central Christian College of Kansas
Friends University
MidAmerica Nazarene University
Sterling College
Tabor College - KS

KENTUCKY

Asbury Theological Seminary
Asbury University
Campbellsville University
Kentucky Christian University

MASSACHUSETTS

Eastern Nazarene College
Gordon College
Gordon-Conwell Theological Seminary

MICHIGAN

Calvin University
Concordia University - Ann Arbor
Cornerstone University
Kuyper College
Spring Arbor University

MINNESOTA

Bethany Lutheran College
Bethel University - MN
Crown College
Martin Luther College
North Central University
University of Northwestern - St. Paul

MISSISSIPPI

Belhaven University
Mississippi College

MISSOURI

College of the Ozarks
Evangel University
Hannibal-LaGrange University
Missouri Baptist University
Ozark Christian College
Southwest Baptist University

NEBRASKA

Concordia University - NE
York University

NEW MEXICO

University of the Southwest

NEW YORK

Houghton University
Roberts Wesleyan University
The King's College

NORTH CAROLINA

Campbell University
Mid-Atlantic Christian University
Montreat College

OHIO

Malone University
Mount Vernon Nazarene University
Ohio Christian University

OKLAHOMA

Mid-America Christian University
Oklahoma Baptist University
Oklahoma Christian University
Oral Roberts University
Southern Nazarene University
Southwestern Christian University

OREGON

Bushnell University
Corban University
George Fox University
Multnomah University
Warner Pacific University

PENNSYLVANIA

Clarks Summit University
Geneva College
Messiah University
University of Valley Forge

SOUTH CAROLINA

Anderson University - SC
Charleston Southern University
Columbia International University
Erskine College
Southern Wesleyan University

TENNESSEE

Johnson University
King University
Lee University
Lipscomb University
Milligan University
Southern Adventist University
Trevecca Nazarene University

TEXAS

Abilene Christian University
Baylor University
Dallas Baptist University
Dallas Theological Seminary
East Texas Baptist University
Hardin-Simmons University
Houston Christian University
Howard Payne University
LeTourneau University
Lubbock Christian University
The King's University
University of Mary Hardin-Baylor
Wayland Baptist University

VIRGINIA

Bluefield University
Regent University

WASHINGTON

Northwest University
Seattle Pacific University
Walla Walla University
Whitworth University

WISCONSIN

Concordia University - WI
Wisconsin Lutheran College

CANADA

ALBERTA

Ambrose University
Prairie College

BRITISH COLUMBIA

Trinity Western University

MANITOBA

Booth University College
Providence University College

NEW BRUNSWICK

Crandall University

ONTARIO

McMaster Divinity College
Redeemer University
Tyndale University

SASKATCHEWAN

Briercrest College and Seminary

INTERNATIONAL INSTITUTIONS

AUSTRALIA

Alphacrucis College
Avondale University
Christian Heritage College
Eastern College of Australia
Excelsia College
Tabor College - AUS

DOMINICAN REPUBLIC

Universidad Nacional Evangelica

EL SALVADOR

Universidad Evangelica de El Salvador

GHANA

Central University

HAITI

Emmaus University of Haiti
North Haiti Christian University
Queensland University

HUNGARY

John Wesley Theological College
Karoli Gaspar University of the Reformed Church In Hungary

INDONESIA

Universitas Pelita Harapan

ISRAEL

Jerusalem University College
University of the Holy Land

JAPAN

Tokyo Christian University

KENYA

Africa International University
Africa Nazarene University
Daystar University

LITHUANIA

LCC International University

NETHERLANDS

Christelijke Hogeschool Ede

NEW ZEALAND

Laidlaw College

SOUTH KOREA

Baekseok University - South Korea
Handong Global University

TAIWAN

Christ's College Taipei
Sheng-te Christian College
Tunghai University

UGANDA

Uganda Christian University

UNITED KINGDOM

Liverpool Hope University
Wycliffe Hall



COUNCIL FOR CHRISTIAN COLLEGES & UNIVERSITIES

321 8th Street NE  
Washington, D.C. 20002

**[www.cccu.org](http://www.cccu.org)**